

ATEX 3rd Party Certified



CE II 2 GD

Ex h IIC T6 Gb
Ex h IIIC T85°C Db
LCIE 03 ATEX 6310 X



Ex h IIC T6 Gb
Ex h IIIC T85°C Db
IEEx LCIE 17.0076 X



GUARANTEED for the Safe Recovery of Combustible/Conductive Dusts

ESD Safe Vacuum Systems for Hazardous Locations are designed to prevent ignition hazards.

We use metal parts or Static Dissipative Powder Coating to prevent Electrostatic Discharge (ESD)



Characteristics



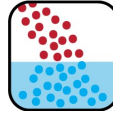
EX Certified



Less than 10 ohms



Dry Recovery



Wet Mix - Water



HEPA - Included



High Filtration Efficiency Unit



Coalescing Filter Element



Detachable Tank



SS 304

- Immersion separator "Wet (Water) Mix" - Only meant to be used with water (no oil)
- **Designed for the Recovery and INERTIZATION of Conductive and Explosive Dust, such as Aluminum, Magnesium, Zirconium and other commercial alloys, into a Liquid Immersion Bath**
- Legally certified explosion proof/dust ignition proof
- Meets the requirements for a Liquid Precipitation Collector for metal dusts as outlined in NFPA 484
- Less than 10 ohms of resistivity
- Coalescing Filter Element (CFE) for moisture removal
- HEPA filter with an efficiency of 99.995% at 0.3 micron. Tested IEST-RP-CC001. H14 by MPPS method as per EN 1822 and OSHA compliant. All of our HEPA vacuum systems are aerosol leak tested before leaving our facility - included
- Pneumatic (air-operated)
- Recovery capacity of 22 lb (10 kg) of dust into 7.9 gal. (30L) of water (no oil)
- Stainless steel SAE 304 body and heavy duty powder coated cart
- Detachable recovery tank (DT) for easy disposal of recovered materials
- Equipped with a liquid level indicator
- Tiger-Vac® carries a large inventory of shrouded sanders, grinders and dustless drill kits, along with a large suction port for maximum dust recovery

Specifications

| SS-IT (85L) EX (CFE) SK HEPA WET (WATER) MIX | 113120 |
|--|--|
| Model Name | SS-IT (85L) EX (CFE) SK HEPA WET (WATER) MIX |
| Type (Powerhead) | Pneumatic |
| Venturi | Single |
| Venturi (diam.) | 5 mm |
| Minimum Compressor | 15-25 HP |
| Air Line Size (Diam.) | 3/4" (19mm) |
| Input Air Volume | 21.2 L/s |
| Input Air Pressure | 5.5 Bar |
| Air Flow | 204 m ³ /h |
| Vacuum Pressure | 3050 mm H ₂ O |
| Suction Inlet | 50 mm |
| Cart Type | Detachable Tank (DT) |
| Filter Cleaning | None |
| Length | 102 cm |
| Width | 61 cm |
| Height | 180 cm |
| Weight (Vacuum Only) | 94 kg. |

Please note that specifications are subject to change without notice



Arc Technologies

Worldwide Technology For Controlled Environments

Web site: www.arctechnologies.co.uk

email: achambers@arctechnologies.co.uk

Tel: +(44)0115 928 1508

Use only recommended tools & accessories



SS-IT (85L) EX (CFE) HEPA with Recovery Tank removed



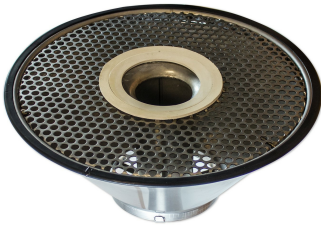
Coalescing Filter Element (CFE) - Included



Liquid Level Indicator Tube - Included



Sieve Basket - Included



Cone for Interceptors - Included



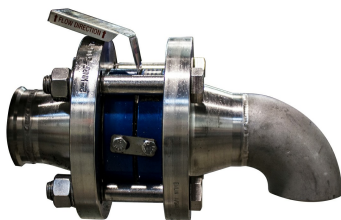
Wye Connector - Included



Suction/Airline Hose Assembly, Static Dissipative and Conductive - Included



Air Supply Hose Assembly, Static Dissipative and Conductive - Included



Rupture Disk - Optional



Optional Dust Extractor Arm



Arc Technologies

Worldwide Technology For Controlled Environments

Web site: www.arctechnologies.co.uk

email: achambers@arctechnologies.co.uk

Tel: +(44)0115 928 1508